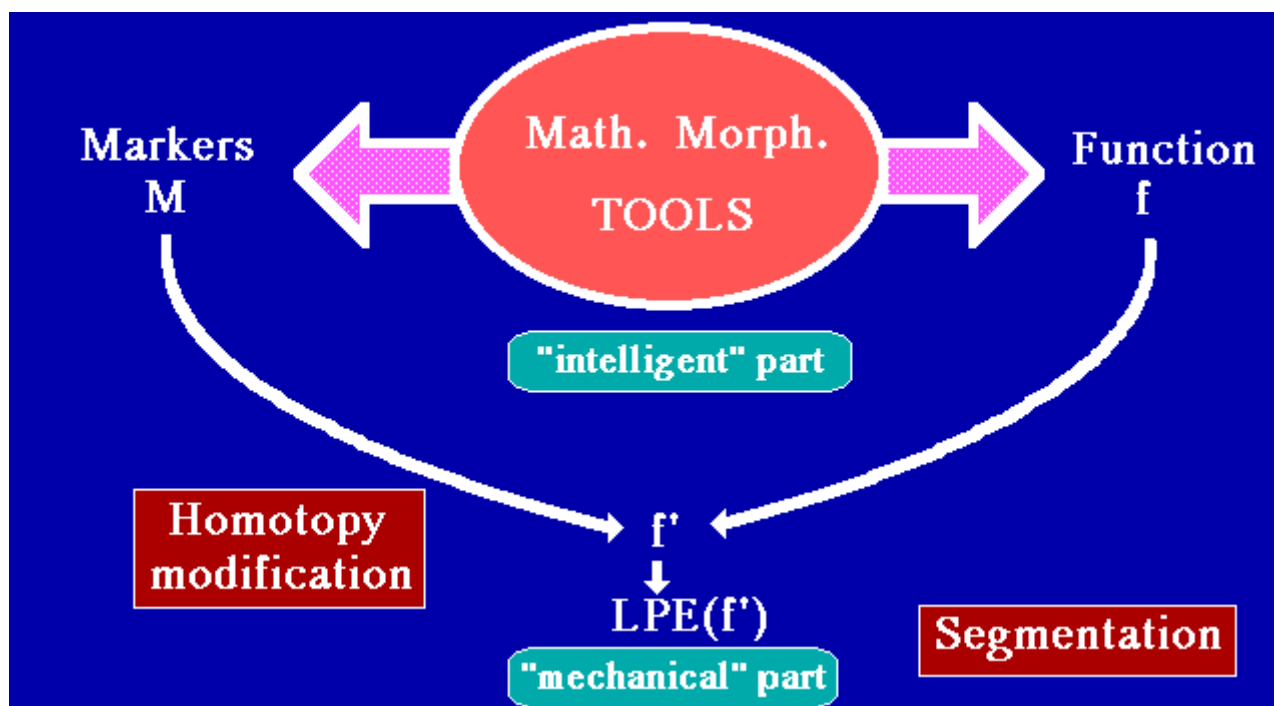
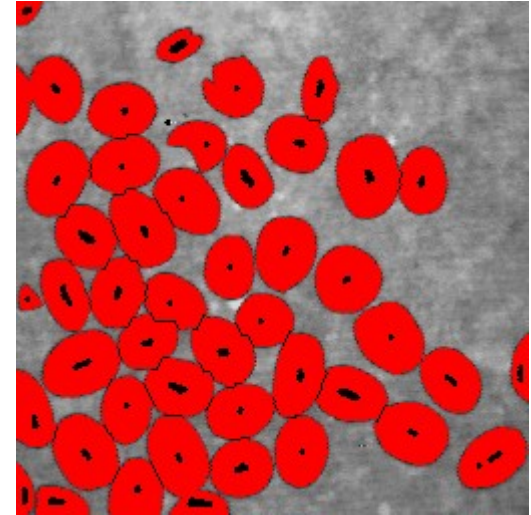
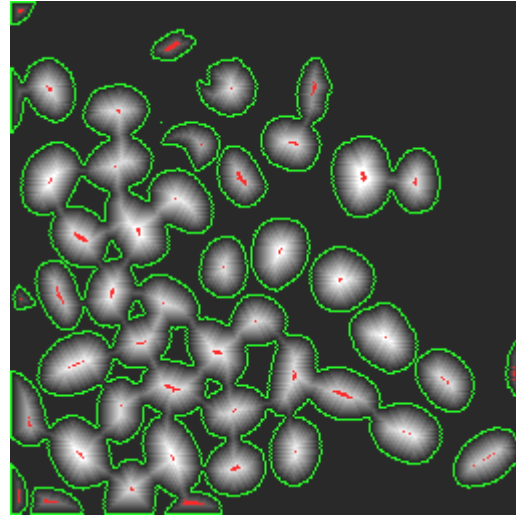
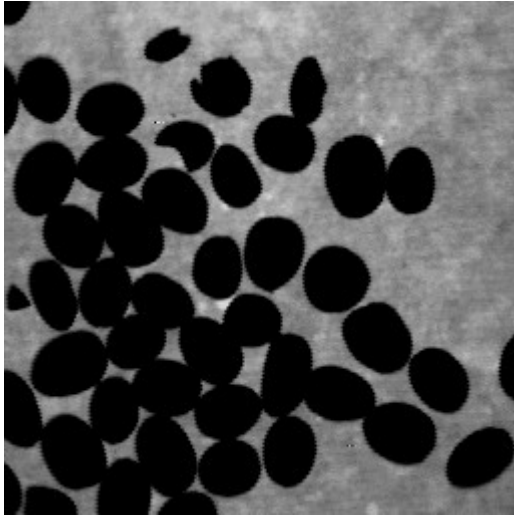
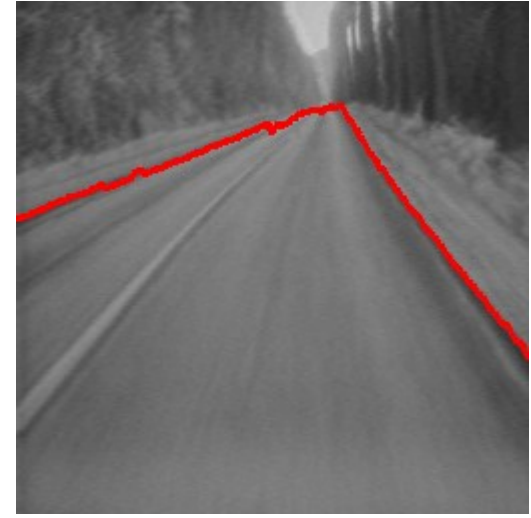


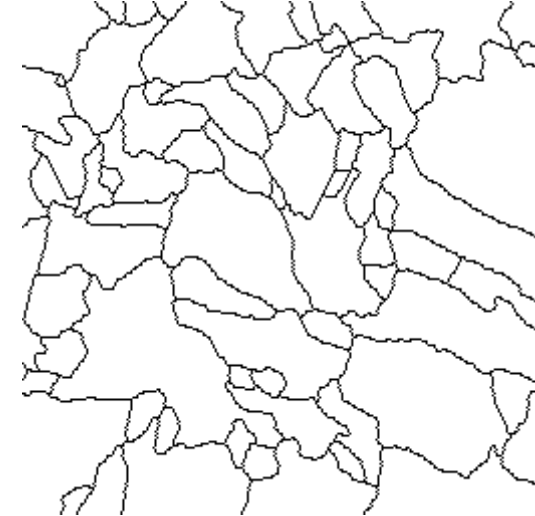
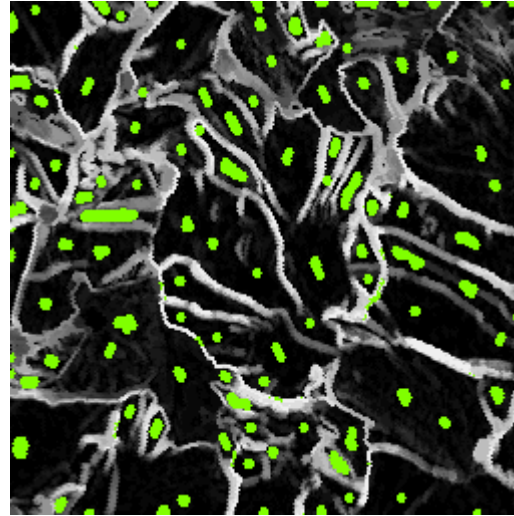
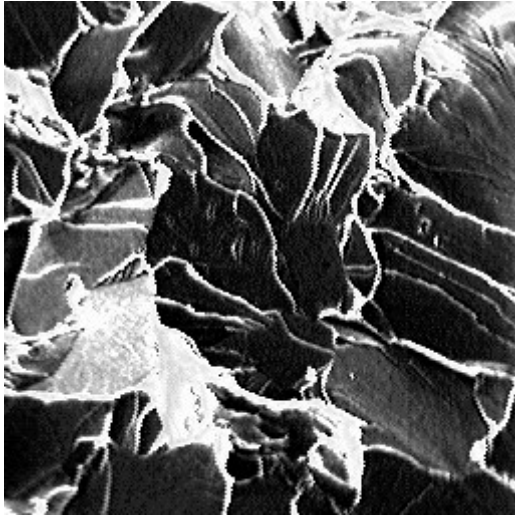
Electrophoresis gel image and watershed transformation of the gradient image : oversegmentation





Cleavage fracture in steel

The problem here consists in extracting the cleavage facets from a fractured surface in steel (MEB image). A rather complex combination of contrast and distance functions is used in this example.



Silver grains on a photographic plate

This example is more difficult than the coffee beans application because the overlapping regions must be segmented too.

